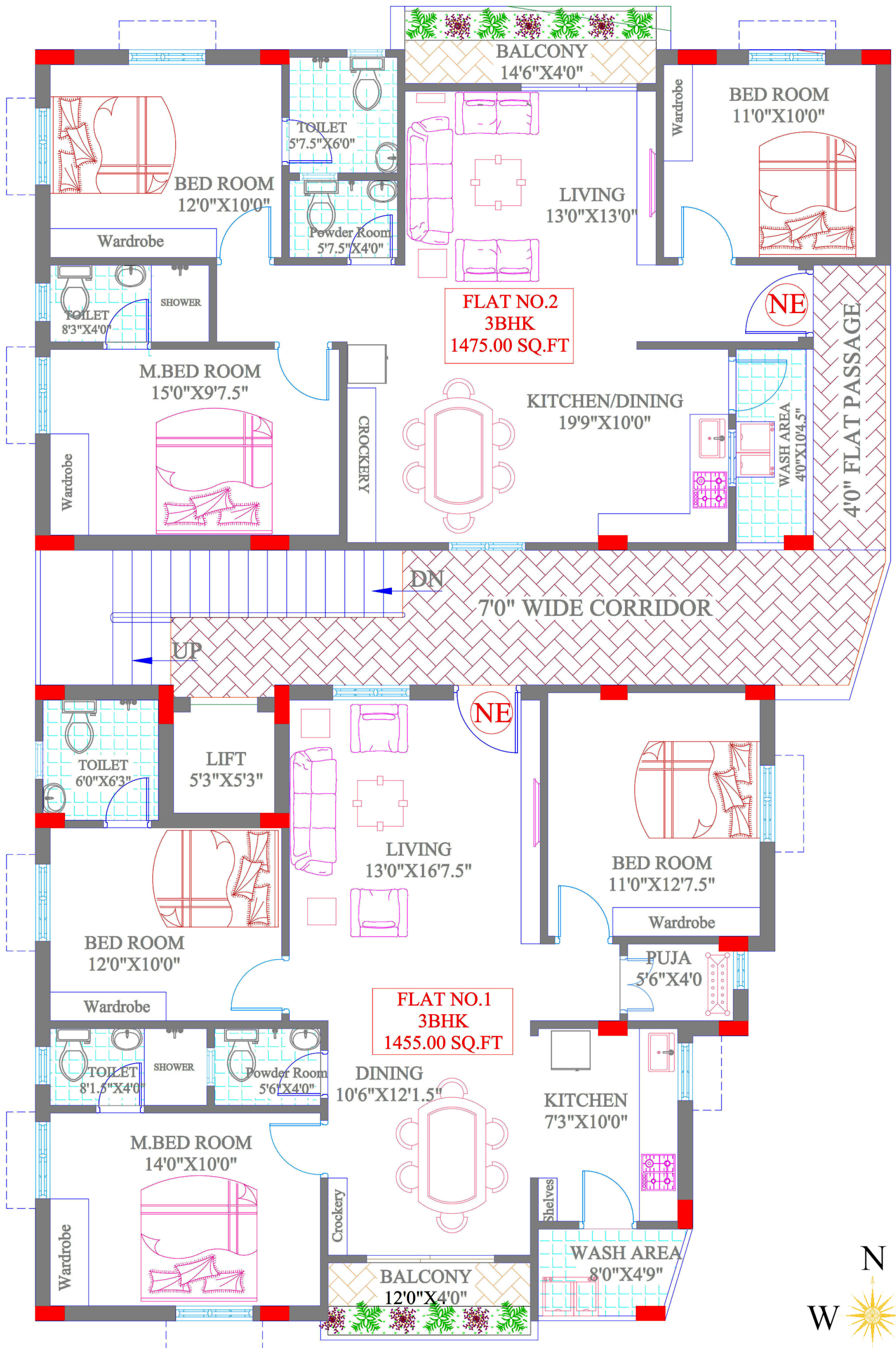




SREE NIRMALA ENCLAVE



BLOCK-B

SPECIFICATIONS

STRUCTURE : RCC framed structure.

SUPER STRUCTURE: 9" Thickness for outer walls/4" Thickness for inner walls in cement mortar.

PLASTERING: Double coat plastering both inside and outside with CM1:6

MAIN DOOR: Teak wood frame and aesthetically designed teak venner flush wood shutter with good quality hardware. **INTERNAL DOORS:** Teak wood WPC frames laminated flush doors with good quality hardware.

WINDOWS: UPVC Windows with tinted /plain glass panel along with mosquito mesh and MS safety grill for windows.

KITCHEN: Polished granite platform with superior stainless sink (ISI), 3ft glazed tile dado above kitchen platform.

FLOORING: Premium Quality Vitrified tiles of 2.0' x 4.0' size double charge/ GVT of reputed make in Hall, Kitchen and bedrooms. Glazed ceramic wall tile up to door height of 2'x1' size for toilets and Antiskid tiles for flooring in Toilets. Ceramic wall tiles for wash areas and Kitchen.

INTERIOR PAINTING: Two coats of Lappam finish, primer coat, and 2 coats of emulsion paint of Asian or equivalent make.

EXTERIOR PAINTING: Weather proof emulsion paints of Asian or equivalent.

TOILETS: Concealed CPVC pipe line for internal lines, PVC line for outer lines and all CP Fittings of Jaguar or equivalent make, Hind ware or equivalent make Sanitary ware.

ELETRICIAL: Concealed conduit wiring with PVC insulated copper cables for light, fan and plug points, split A/c points in all bedrooms with copper cabling of Finolex or equivalent make with Legrand I Anchor or equivalent make modular switches.

- A. Drawing room with provision for one fan point, two light points, two three pin sockets, TV and telephone points.
- B. Living and Dining room will be provided with two fan points, one chandelier point, two light points,, TV point and two three pin 5amps sockets and one three pin 15amps socket.
- C. Bed rooms will be provided with one fan point, two light point, two three pin 5 amps switch and socket and 15 amps split AC provision.
- D. Kitchen will be provided with 5amps points for chimney, aqua guard and 15 amps switch and socket for other necessary appliances.
- E. Common points including 15 amps switch and socket for washing machine in utility area, fridge in dining area and geyser in each toilet, one 5 amps light point in each balcony.

GENERATOR: Kirloskar Make Generator for common lighting and back up for 3 lights and 3 fans for each flat.

LIFT: One Lift of ESCO/ Equivalent.

WATER SUPPLY: Separate water sump and overhead tanks for municipal and bore water.

PARKING: Stilt Level Parking with Flooring Tiles.

COMMON AREAS: Flooring of corridor and steps in granite and railing in stainless Steel.



LOCATION PLAN (NOT TO SCALE)



VAJRA HOMES PVT LTD

Flat No.502, Ganesh Nivas, Shiv Bagh, Ameerpet,
Hyderabad, Telangana. - 500016 ☎ **8333911555, 9246364558**

e-mail : vajrahomesprivatelimited@gmail.com | Website : www.vajrahomes.com

**Note: This Broucher is only a conceptual Presentation of a project and not a legal offering.
The promoters reserve the right to alter and make changes in elevation, specifications and plans as deemed it.**